

Welcome to Sacred Heart Reception



Mission Statement

To go forward together in Christ

To respect our neighbour

And to always give of our best



Reception staff

Miss Barker	EYFS Leader & St. Jude Reception Class teacher
Miss Ahmet	St. Peter Reception Class teacher
TBC	Learning Support Assistant
TBC	Learning Support Assistant

School Hours

**Our soft start will continue to run from 8:45-9am
and finishes at 3:30pm.**

Lunch is at 12:00 midday.

**It is important that children arrive and are
collected on time. If your child is going to be late
or absent please ring and inform the school.**



Attendance & Punctuality

It is very important that children attend school everyday and on time as frequent absences or lateness can seriously affect their learning. Your child should only be off school if they are sick. You must inform the school of all absences.



Education Welfare check the attendance of all children every half term. A referral will be made if your child's attendance gives a cause for concern.

Even when you're very small good attendance makes a **BIG** difference!



Regular attendance helps children to:

- make friends and learn social skills
- feel settled and happy
- enjoy their learning
- get ready for school

Help your child to succeed in the early years, at school and in adult life

Good attendance
means...



Lunch Arrangements



We have our own full-time chef and work in partnership with Accent catering.

All our meals are cooked freshly on site.

Islington Council provides free school dinners for all Islington school children.

To be eligible for this, you will need to fill out a free school meals form which can be obtained from the office.

School Uniform

It is compulsory for children to wear uniform in Reception. School uniform can only be purchased from **Rough Cut Casuals, 16 Chapel Market, N1 9EZ.**

Orders may be placed on-line at www.roughcutcasuals.co.uk

Bottoms for EYFS children:

EYFS children may wear grey skirts; or grey or black tracksuit bottoms or leggings instead of the grey trousers as these promote independent toileting.

School winter and summer hats are part of the school uniform and can also be purchased from Rough Cut Casuals.

Reception children DO NOT need a P.E. kit as Physical Development is integrated into our curriculum.

School Uniform Update

As a result of feedback to the parent uniform survey this year, there will be some changes to our uniform from Sept 2024:

Larger logo jumpers will be replaced with either the new smaller logo jumper or cardigan and phased out during the 2024-25 academic year:

No plain jumpers/cardigans from September:



School Uniform Update

Green polo logo tops will be replaced with plain white polo shirts and phased out during the 2024-25 academic year:

Please see below the price comparison for green and white polo t-shirts:



One green polo t-shirt

£10.50-£14.00



Plain white polo t-shirts

TU at Sainsburys, 2pack £4.00-£8.00

Asda, 5 pack £7.50-£12.50

Marks & Spencer, 2 pack £7.00-£12.00

Next, 2 pack, £7.00-£10.50

Children's Clothes

In Reception we try to build on the good work of our Nursery towards independence:

Only Black Velcro shoes/trainers with no logos are permitted:



A plain dark waterproof coat that children can fasten themselves is also a good idea.



Please begin to practice these skills your child before they start in September.

Labelling Clothes

Children's names **MUST** be put on all their clothing and hats because on occasion garments can be mislaid and it is very difficult to identify unnamed articles of uniform. It also wastes valuable teaching time.

This is the responsibility of parents and carers.

Any unclaimed, unlabelled uniform will be taken to the lost property bin in the school office. If your child loses an item of clothing, you are welcome to take a replacement from the lost property bin.

Spare Clothes

Please provide a change of clothes (this does not have to be school uniform) for your child in a bag with your child's name on. This is to be kept on your child's peg at school.

Jewellery

For health and safety reasons children are not allowed to wear jewellery except for earrings and these must be studs or very small "sleepers".

Book Bags



In Reception we aim to encourage enjoyment of books. We will work in partnership with you to teach your child how to read. From mid-September we will send home books with your child every day.

It is important to keep books in good condition and children must have a Sacred Heart book bag to keep their book in. These are available from Rough Cut Casuals.

Home/School Reading & Phonics

Every day your child will bring home a Sound Book and a reading book with a Reading Record which we expect you to sign. This will be checked every day.

It is very important that you read with your child every day.

In addition children will have regular 1:1 reading sessions with the Teacher or Learning Support Assistant.

Your child will be introduced to new sounds during the first term. The Sound Book will consist of letters for your child to practice sounding out. This links to the daily phonics sessions in class. It is really important to practice the daily letter sound in order that your child will keep up with the class phonics.

Homework

Homework is phased in during the first half term. Your child's teacher will provide you with the necessary information as appropriate.

Subject	Monday	Tuesday	Wednesday	Thursday	Friday
READING: For at least 5-10 mins. Reading Record to be signed.	✓	✓	✓	✓	✓
PHONICS SOUND BOOK New sound sticker to revise and trace underneath.	✓	✓	✓	✓	
MATHS: Monthly practical activity ideas sent via our online learning platform SeeSaw which are linked to our learning in class					

Family Learning Information Sessions



Please look out for parent information sessions throughout the year to inform you of school routines and practices such as Phonics & Maths Evenings.

These sessions will let you know how you can help your child at home.

There will also be learning support on SeeSaw your child's learning platform.

School Fund



We ask for a contribution of £10 per term towards our school building fund. This pays for 10% of building work that takes place in the school.

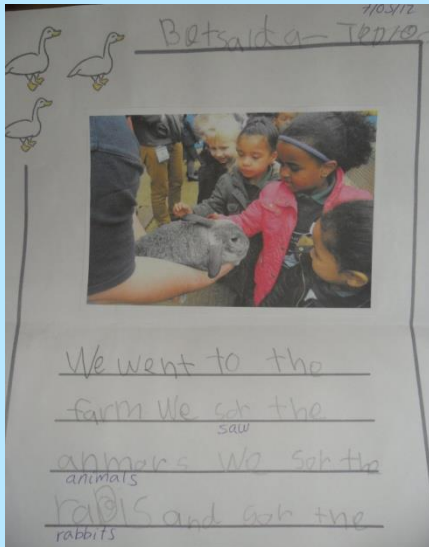
FRIENDS OF SACRED HEART (FOSH)

At Sacred Heart we have an organisation called FOSH which organises events and raises funds for the school.

Information on FOSH meetings is detailed in weekly newsletters. All parents/carers are automatically members - new parents are especially welcome to become involved.

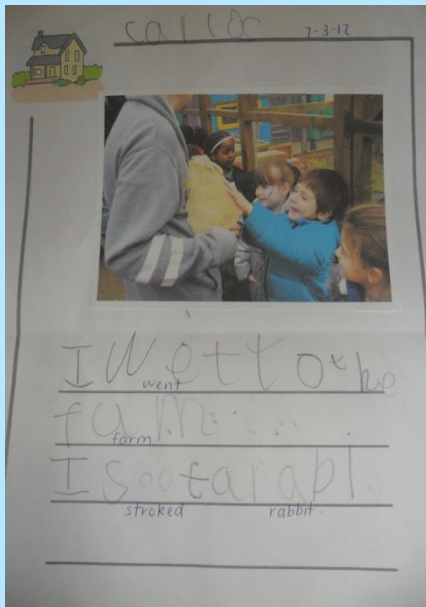


Meetings for Parents

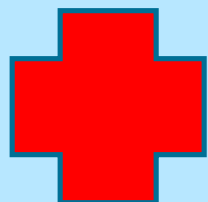


You will be invited to attend a parents evening in the Autumn and Spring terms to meet with your child's class teacher to discuss how your child is settling in, see how they are progressing and have an opportunity to look at your child's work.

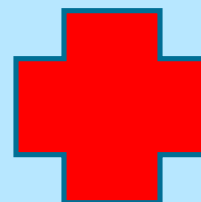
In the Summer term you will receive a written end of year report recording your child's achievement.



Staff will greet you and your child every morning when you arrive at school. There is always the opportunity to meet with staff after school (by appointment) should you wish to discuss any issues.



First Aid



As children are involved in active play there are occasions when accidents do happen and children hurt themselves. Parents/carers are informed of all recorded accidents.

If we feel there is cause for concern we will ring parents (it is very important we have your correct contact details, particularly if they change).

There are trained paediatric first aid staff both in Reception and the rest of the school.

Contact Numbers

Should we need to contact you in an emergency it is very important that school has your correct contact numbers.

Please inform the school immediately if your contact details change.

It is really important we have at least two contact numbers.



Safeguarding

Please be aware that for safeguarding purposes, school staff are only allowed to release your child to a named person at the end of their school day.

It is very important you list all possible carers that might pick your child up.

In the event of an emergency (for example you have arranged for someone other than a named person to come and collect your child), please phone the school office to inform them who will be collecting your child on that particular day.

Safeguarding is everyone's responsibility

The Designated Safeguarding Lead is **Mr Rodrigo**:



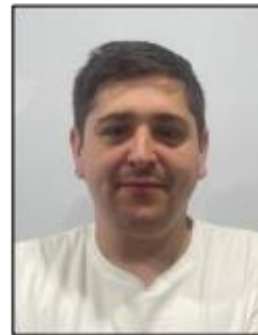
The Deputy Safeguarding Leads are:



Mr Lane



Mrs Kelly



Mr Fletcher



Miss LeFleming

Our Setting

Like our Nursery, the Reception in Sacred Heart consists of two classrooms and one shared outdoor area.

Your child will have their own designated classroom and teacher where they will arrive in the morning and be picked up from at home time. Children will have access at certain times of the day to both classrooms and the outside area.



Special Books

Your child will have a 'Special Book' whilst at Reception. This consists of photos and their work such as paintings, pieces of writing and collages which documents your child's progress while they are in Reception. Your child will contribute to this with an adult throughout the school year. You will be given an opportunity to look through this at parent meetings and will be able to take all their books home to keep at the end of Reception.



Reception Curriculum

For children between the ages of 3-5 years, Sacred Heart provides a curriculum for the Early Years Foundation Stage of Education.

This curriculum is set out in a document published by the Department of Education and Skills. The Nursery and Reception classes follow this guidance.

As a Catholic school we also teach Religious Education. We use WDES RE Programme as the foundation for our RE teaching.

Early Years Foundation Stage

The guidance sets out Early Learning Goals. These goals are the knowledge, skills and understanding young children should have acquired by the end of the academic year in which they reach the age of five.

For each Early Learning Goal there are educational programmes. These are the matters, skills and processes which are required to be taught to young children in order for them to achieve the Early Learning Goals.

There are seven areas of learning and development that must shape educational programmes in early years settings.

Three areas are particularly crucial for igniting children's curiosity and enthusiasm for learning, and for building their capacity to learn, form relationships and thrive.

The three areas, the *prime* areas:

- ❖ communication and language
- ❖ physical development
- ❖ personal, social and emotional development



Physical Development in EYFS

This area is typically known as P.E. in Years 1-6. Physical Development is integrated into all aspects of our curriculum. We provide daily opportunities for children to be active & develop their coordination, control & movement. They practice fine-motor and gross-motor movement everyday.

Children **do NOT need a PE kit** until they begin more formal PE lessons in Year 1.



There are also four *specific* areas, through which the three prime areas are strengthened and applied.

The specific areas are:

- literacy
- mathematics
- understanding the world
- expressive arts and design



These areas will become more of a focus as children gain confidence and expertise in the three prime areas.

Importance of Play

Research has shown the importance of play in helping children to think, learn and develop.

In Reception we offer a rich environment that stimulates and encourages child-initiated play.

We make observations of children in order to assess their needs and interests and plan accordingly to extend their learning and development.

We also use the Early Learning Goals and Programmes to provide a range of play activities which help children to make progress in each of the areas of learning and development.

Characteristics of Effective Learning

In Reception we also observe for the Characteristics of Effective Learning. These are:

- Playing and Exploring**
- Active Learning**
- Creative and Critical Thinking**

Through development of these characteristics children develop resilience, problem solving and curiosity.

These characteristics are developed through all of the 7 areas of learning and we encourage you to also foster these at home too.

Religious Education

At Sacred Heart we use the WDES RE programme as the foundation of our RE teaching. This is based on the teachings of the Catholic Church and is taught through different themes which offer opportunities for young children to explore and develop spiritually, morally, intellectually and emotionally.

These themes promote caring values and attitudes, help to raise self-esteem and encourage children to make their own moral decisions based on their knowledge of the Catholic faith and experience.



Starting in Reception

Your child will be given an individual starting date between
Monday 9th - Friday 13th September

This is to allow for staff training & to complete home visits for new starters.

You will receive this in a letter at the end of this meeting.



Transition

For children who attend our Nursery:

The Nursery & Reception classes work closely together so the children are familiar with the Reception staff.

As part of their transition, throughout June & July, Nursery children visit in groups to spend some time playing in Reception! Many of your children have already had their first visit to St. Jude & St. Peter!

They will officially meet their teacher and LSA in the last week of term!

Transition

For children new to our school:

Home visits: Your child's class teacher and LSA will come and visit you and your child at home. This is so your child can become familiar with their new teachers in a setting they feel comfortable in and so you can ask us any questions you may have.

A letter informing you of the date and time of your home visit in early September is included with your start date letter which you can collect at the end of this meeting.

Visiting Reception: You are very welcome to come to our Stay-and-Play event on **Tuesday 9th July, 9.30-10.30** so your child can spend some time in their new learning environment! Please confirm whether you will be attending at the end of this meeting or by calling the school office.

Blended Learning



SeeSaw is our home learning platform. It is used:

- As a line of communication between parents and school
- WOW Moments – sharing achievements between home and school
- Announcements about upcoming events, important dates for your calendar
- Information on how to support your child's learning at home e.g. phonics and math's videos
- In the event that we need ever did need to move to online learning



- Children already at Sacred Heart Nursery will have been given their QR code log-ins already, please see your class teacher if you need yours again.
- For new parents, in September you will receive instructions on how to download the app and log in with your individual child's QR code log-in.
- A video will be uploaded to the EYFS webpage about how to use SeeSaw and its different features.

WOW Moments

In Reception we love celebrating the children's achievements at both school and home.

On SeeSaw you can complete a WOW Moment for your child each week to share something amazing with us that they have done at home.

We love seeing WOW Moments from children trying to be more independent e.g. getting dressed, doing laces, eating independently and anything that you feel is an achievement for your child.



Name: _____ Date: _____

*My home **WOW** moment!*

School News

Our school newsletter is available on our website and is also sent out via email every Friday. This keeps parents up to date with important information and events occurring in the school.

Reception staff will also from time-to-time send announcements about matters which relate solely to Reception via SeeSaw.

3-5-7

Friday 23rd June 2017 Newsletter 35
Sacred Heart Catholic Primary School
Georges Road, Holloway, London N7 8JN
Tel - 020 7607 3407 email - admin@sacredheart.islington.sch.uk
school website - www.sacredheart.islington.sch.uk



Tuesday 27th June - 2:45pm
(Top Hall)
Reception 2 assembly

Wednesday 28th June - 9:15am
(SMMA)
Meeting for new Nursery parents/ carers

Thursday 29th June - 10:00am
(SMMA)
St. Peter and St. Paul Mass (KS2)

Wednesday 30th June - 9:15am
(SMMA)
Meeting for new Reception parents/ carers

Tuesday 11th July - 9:30am

SACRED HEART FEAST DAY

The children had a fantastic time today celebrating our school feast day. Sacred Heart Feast Day falls 19 days after Pentecost and always on a Friday. Our older pupils joined some of our parishioners and parents/carers at Mass this morning. After lunch the children had a special golden time in their classes where they participated in a range of fun activities. You will have noticed too that the children were able to wear their own clothes as part of our fundraiser for the families and victims of the Grenfell Tower disaster. Your generosity has been much appreciated and your donations will be sent off next week. Thank you for your co-operation

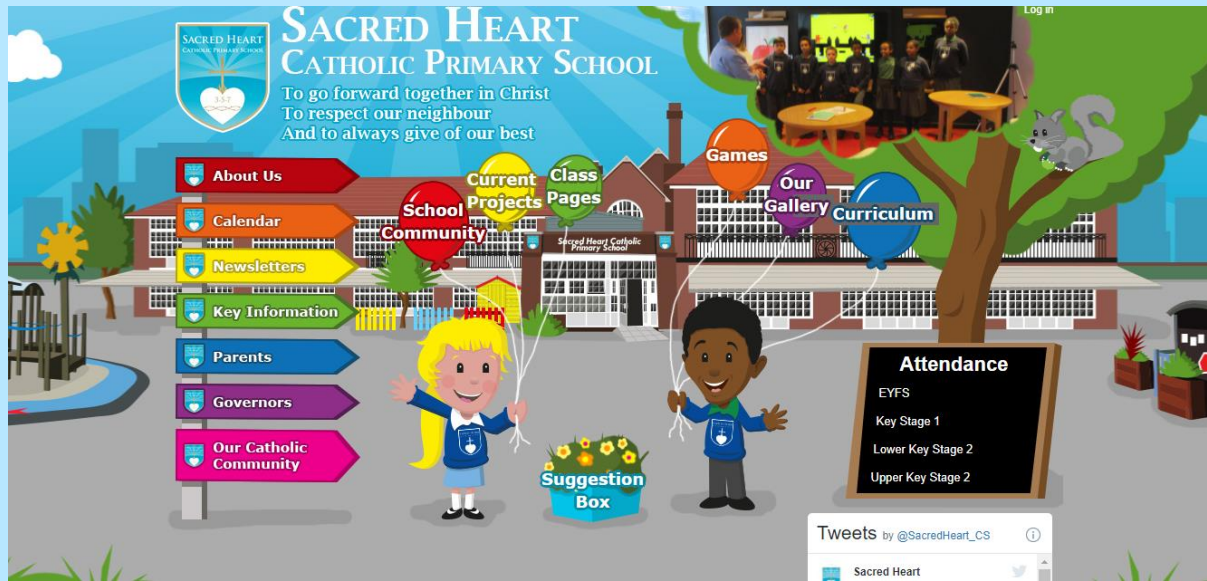


School Website

www.sacredheart.islington.sch.uk

In the 'Parents' section of the school website there is a specific section dedicated to 'Reception Starters September 2024'.

As well as this presentation, you will find the Reception Handbook here.





ANY QUESTIONS

Please now collect your child's start date letters informing you of their class teacher & class name.

CHILDREN NEW TO SACRED HEART:

If you have not already done so, please make sure you bring your child's birth certificate & baptism certificate (if they have one) to the office before summer holidays.